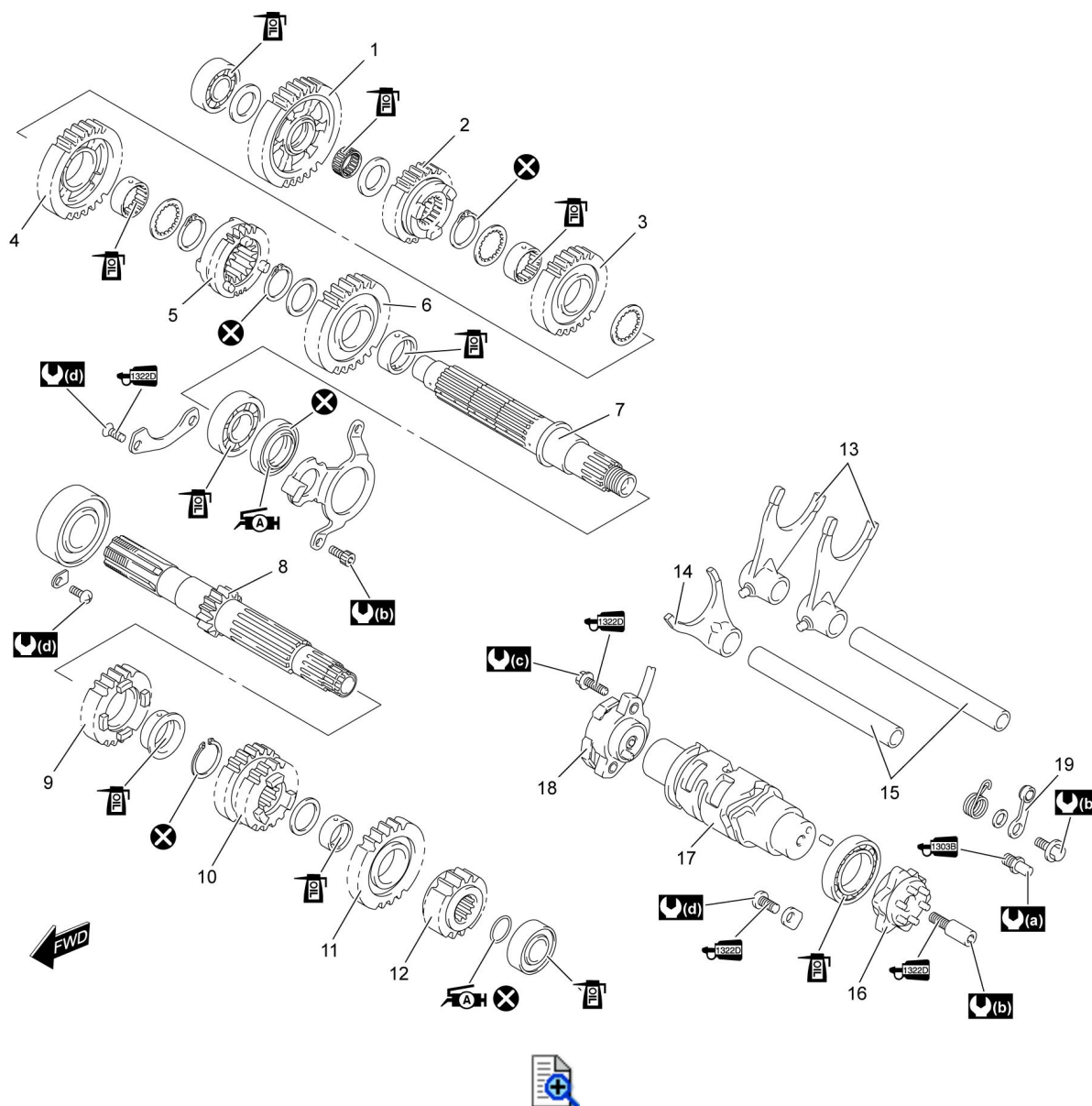


**5B**



## Transmission Components



1.	1st driven gear	8.	Countershaft/1st drive gear	15.	Gearshift fork shaft		6 N·m (0.6 kgf-m, 4.5 lbf-ft)
2.	5th driven gear	9.	5th drive gear	16.	Gearshift cam plate		8.5 N·m (0.85 kgf-m, 6.5 lbf-ft)
3.	4th driven gear	10.	3rd/4th drive gear	17.	Gearshift cam		Apply engine oil.
4.	3rd driven gear	11.	6th drive gear	18.	GP switch		Apply grease.
5.	6th driven gear	12.	2nd drive gear	19.	Gearshift cam stopper		Apply thread lock to thread part.
6.	2nd driven gear	13.	Gearshift fork No. 1		19 N·m (1.9 kgf-m, 14.0 lbf-ft)		Apply thread lock to thread part.
7.	Driveshaft	14.	Gearshift fork No. 2		10 N·m (1.0 kgf-m, 7.5 lbf-ft)		Do not reuse.